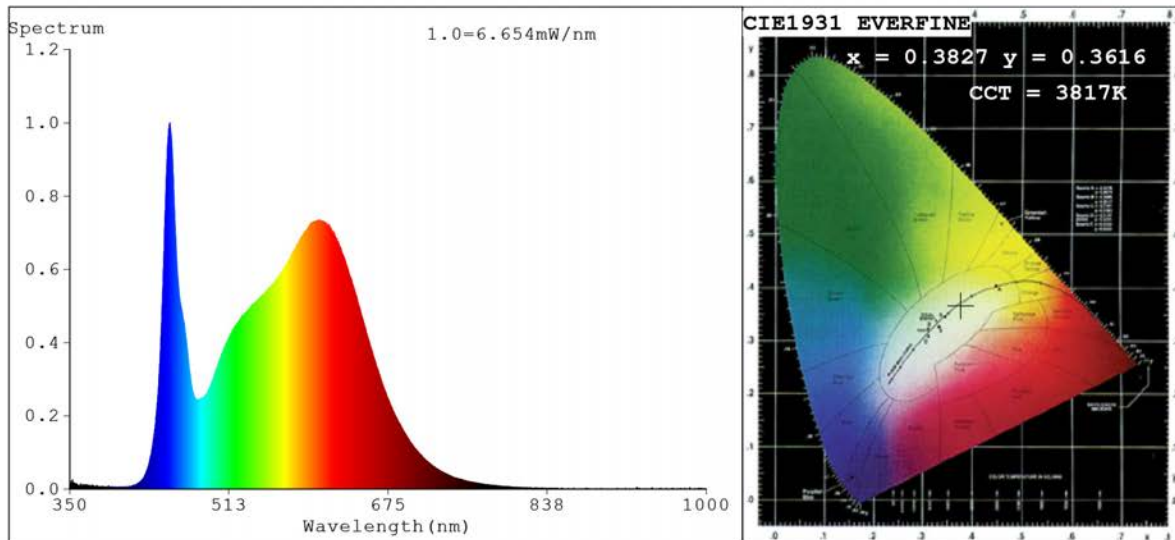


Spectrum Test Report



Color Parameters:

Chromaticity Coordinate: $x=0.3827$ $y=0.3616$ $u'=0.2328$ $v'=0.4951$
 CCT=3817K (Duv=-0.0079) Dominant WL:Ld =585.0nm Purity=23.3%
 Ratio:R=20.6% G=75.3% B=4.1%;;Peak WL:Lp=452.2nm FWHM=19.2nm
 Render Index:Ra=89.8 CRI=86.1 TM30:Rf=85 Rg=100
 R1 =91 R2 =96 R3 =96 R4 =89 R5 =91 R6 =92 R7 =87
 R8 =76 R9 =44 R10=90 R11=89 R12=71 R13=93 R14=99 R15=88

Photo Parameters:

Flux = 270.3 lm Eff. : 27.79 lm/W Fe = 883.5 mW

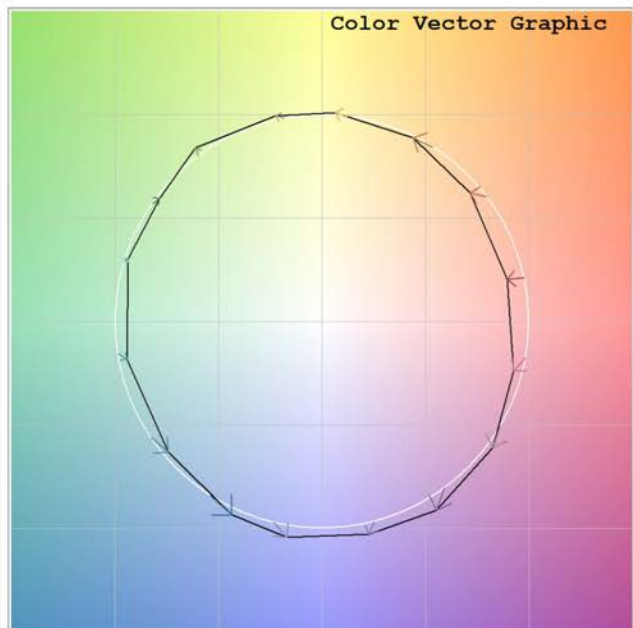
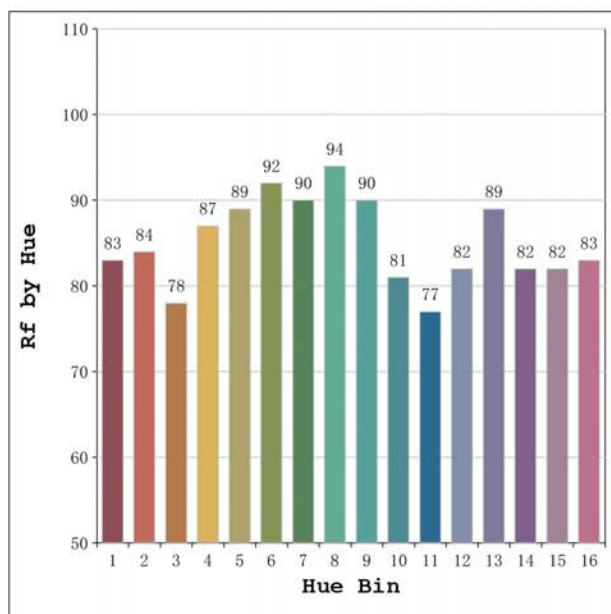
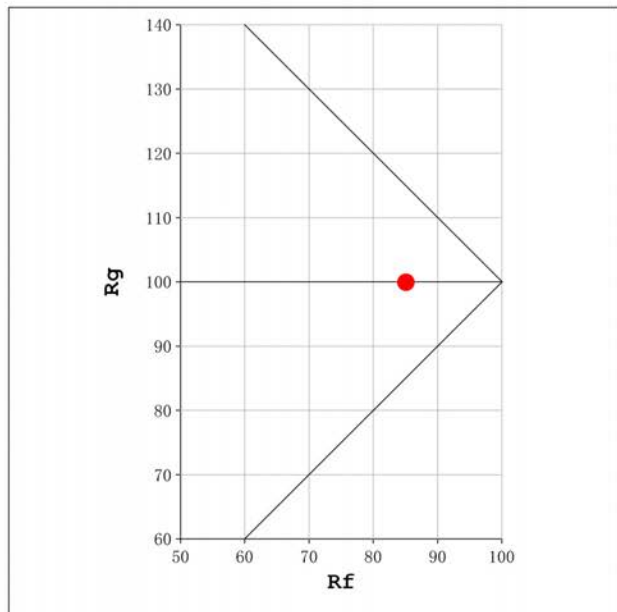
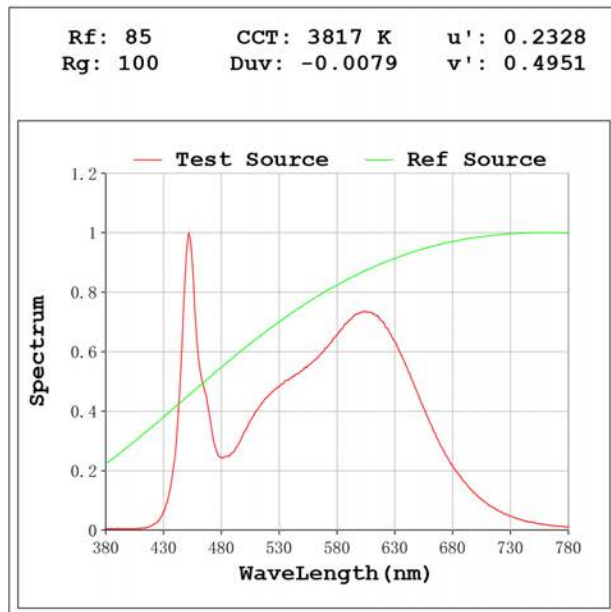
Electrical parameters:

V = 23.998 V I = 0.4052 A P = 9.724 W PF = 1.000

Status: Integral T = 4983 ms Ip = 48857 (75%)

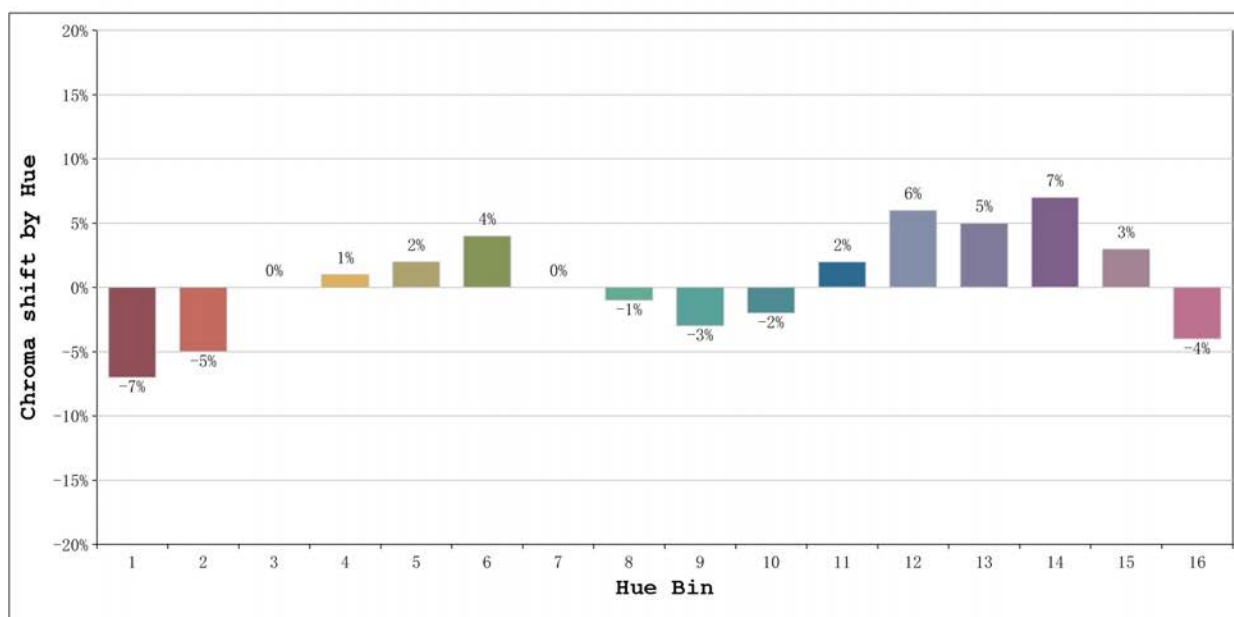
Model:Ecoled Dakar 4000K
 Tester:Sergio Carneros
 Temperature:27Deg
 Manufacturer:Luz Negra S.L

Number: 10.251
 Date:2024-11-18 10:16:14
 Humidity:40%
 Remarks:100cm de neón



Model:Ecoled Dakar 4000K
 Tester:Sergio Carneros
 Temperature:27Deg
 Manufacturer:Luz Negra S.L

Number: 10.251
 Date:2024-11-18 10:16:14
 Humidity:40%
 Remarks:100cm de neón



			Graphic shift(%)	
Hue Bin	Hue Angle	Rf	Chroma	Hue
1	0.0° - 22.5°	83	-7	0
2	22.5° - 45.0°	84	-5	6
3	45.0° - 67.5°	78	0	10
4	67.5° - 90.0°	87	1	6
5	90.0° - 112.5°	89	2	4
6	112.5° - 135.0°	92	4	0
7	135.0° - 157.5°	90	0	-3
8	157.5° - 180.0°	94	-1	-1
9	180.0° - 202.5°	90	-3	4
10	202.5° - 225.0°	81	-2	10
11	225.0° - 247.5°	77	2	14
12	247.5° - 270.0°	82	6	8
13	270.0° - 292.5°	89	5	-3
14	292.5° - 315.0°	82	7	-8
15	315.0° - 337.5°	82	3	-10
16	337.5° - 360.0°	83	-4	-6

Model:Ecoled Dakar 4000K
Tester:Sergio Carneros
Temperature:27Deg
Manufacturer:Luz Negra S.L

Number: 10.251
Date:2024-11-18 10:16:14
Humidity:40%
Remarks:100cm de neón